

7400 NEVIS ROAD, BETHESDA, MD

©2021 THE SCHUMAN TEAM

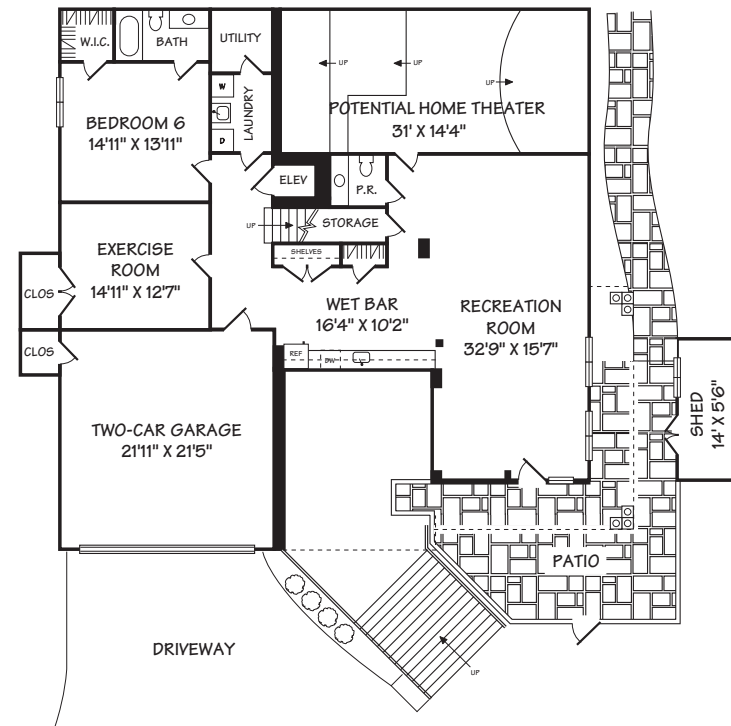
WWW.INTERIORFOOTPRINTS.COM

ALL ILLUSTRATIONS, DIMENSIONS AND SQUARE FOOTAGE ESTIMATES ARE APPROXIMATE AND MAY VARY FROM ACTUAL STRUCTURE. DIMENSIONS HAVE BEEN ROUNDED.

ESTIMATED SQUARE FOOTAGE: 7800

**LOWER LEVEL**

ESTIMATED SQUARE FOOTAGE: 2150



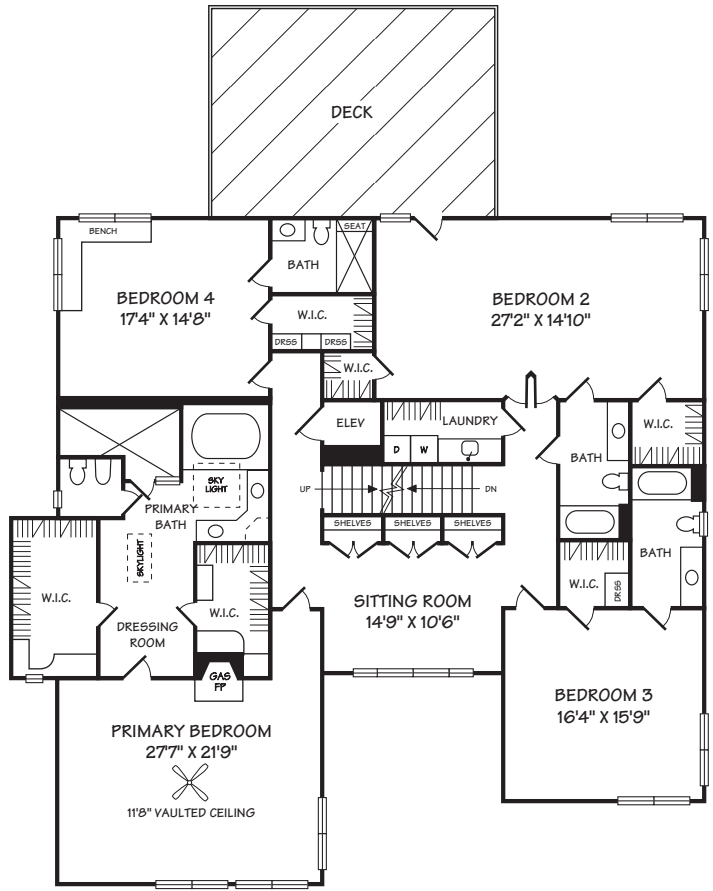
7400 NEVIS ROAD, BETHESDA, MD

©2021 THE SCHUMAN TEAM

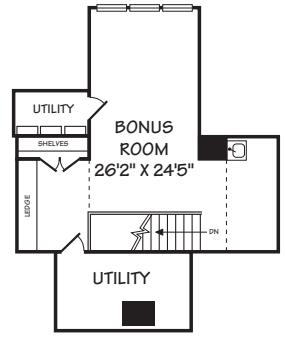
WWW.INTERIORFOOTPRINTS.COM

ALL ILLUSTRATIONS, DIMENSIONS AND SQUARE FOOTAGE ESTIMATES ARE APPROXIMATE AND MAY VARY FROM ACTUAL STRUCTURE. DIMENSIONS HAVE BEEN ROUNDED.

ESTIMATED SQUARE FOOTAGE: 7800



**SECOND LEVEL**  
9' CEILING  
ESTIMATED SQUARE FOOTAGE: 2600



**THIRD LEVEL**  
ESTIMATED SQUARE FOOTAGE: 450