

11804 FORUM HILL COURT, POTOMAC, MD

©2021 THE SCHUMAN TEAM

WWW.INTERIORFOOTPRINTS.COM

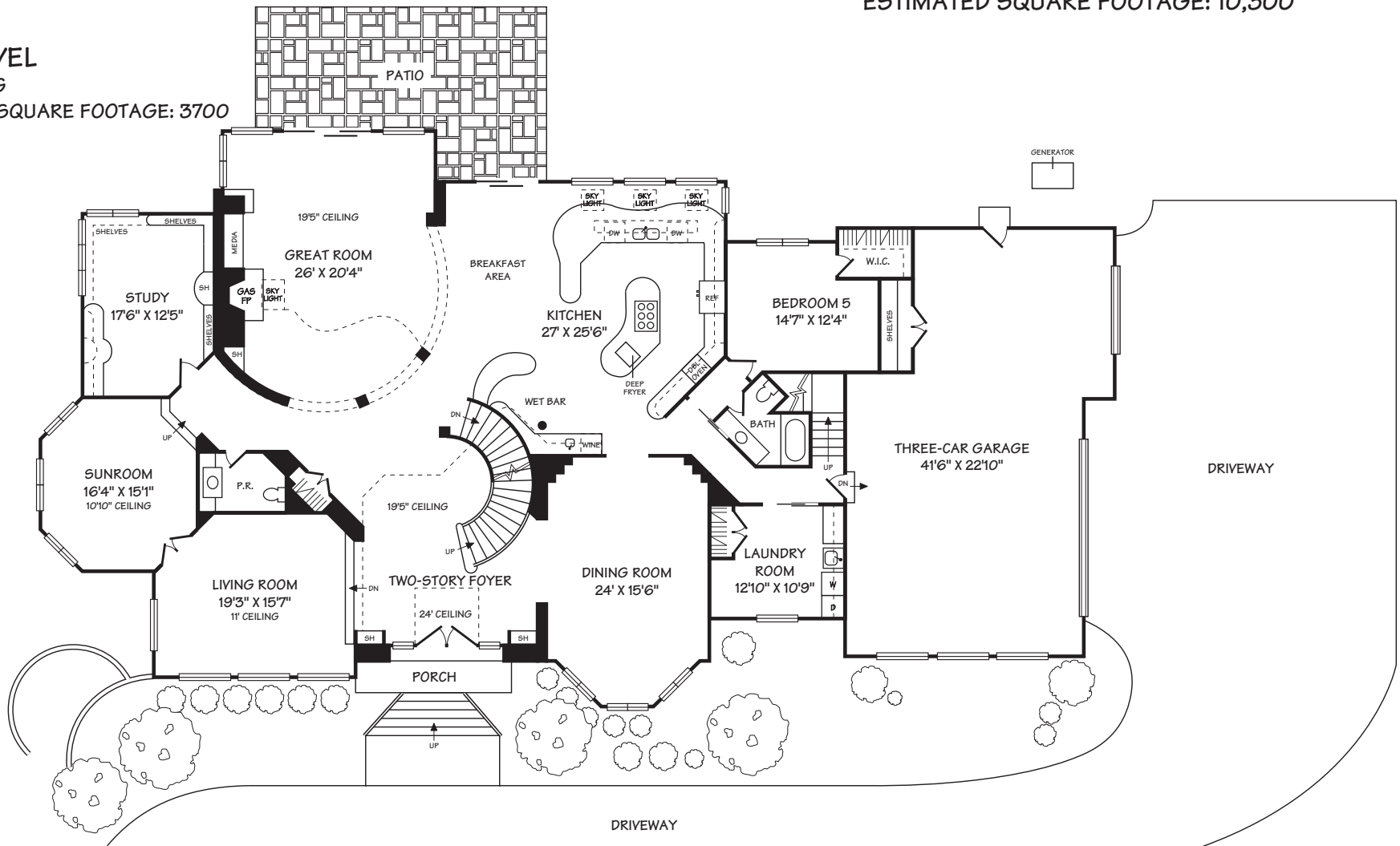
ALL ILLUSTRATIONS, DIMENSIONS AND SQUARE FOOTAGE ESTIMATES ARE APPROXIMATE AND MAY VARY FROM ACTUAL STRUCTURE. DIMENSIONS HAVE BEEN ROUNDED.

ESTIMATED SQUARE FOOTAGE: 10,300

### MAIN LEVEL

9'10" CEILING

ESTIMATED SQUARE FOOTAGE: 3700



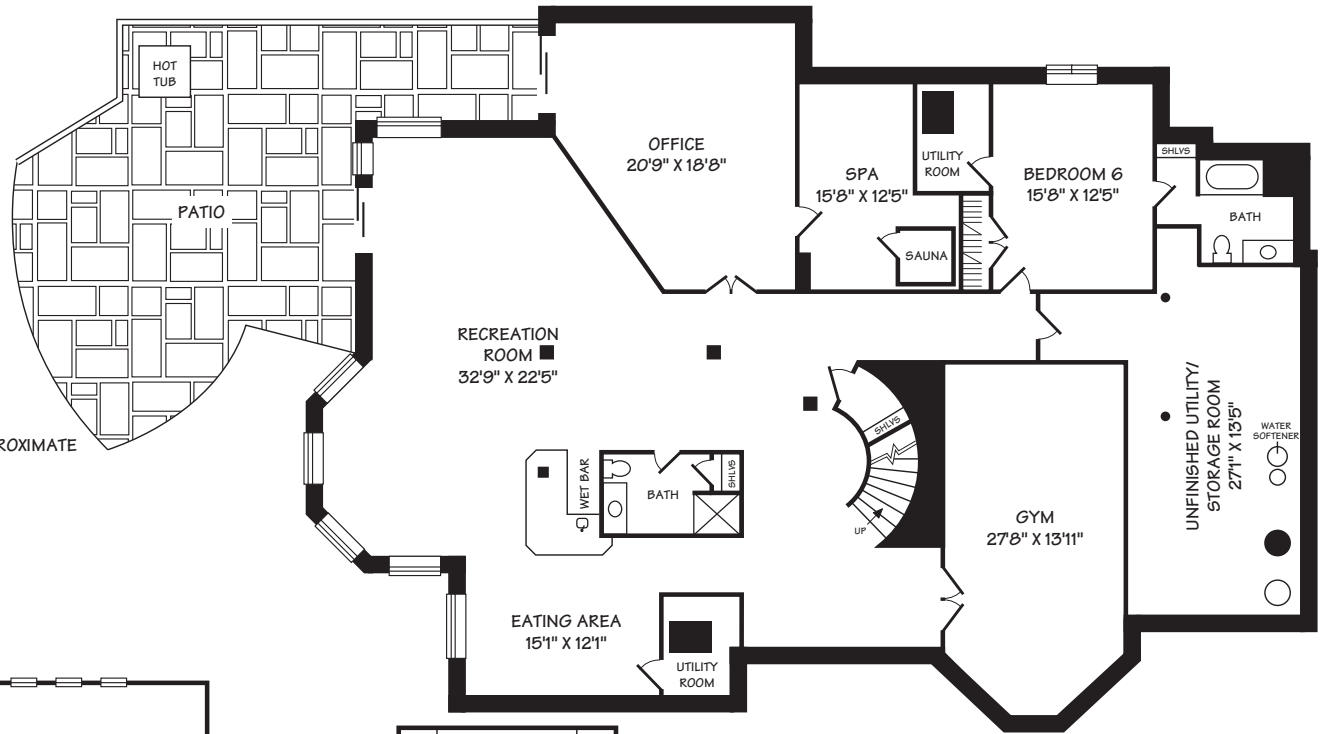
11804 FORUM HILL COURT, POTOMAC, MD

©2021 THE SCHUMAN TEAM

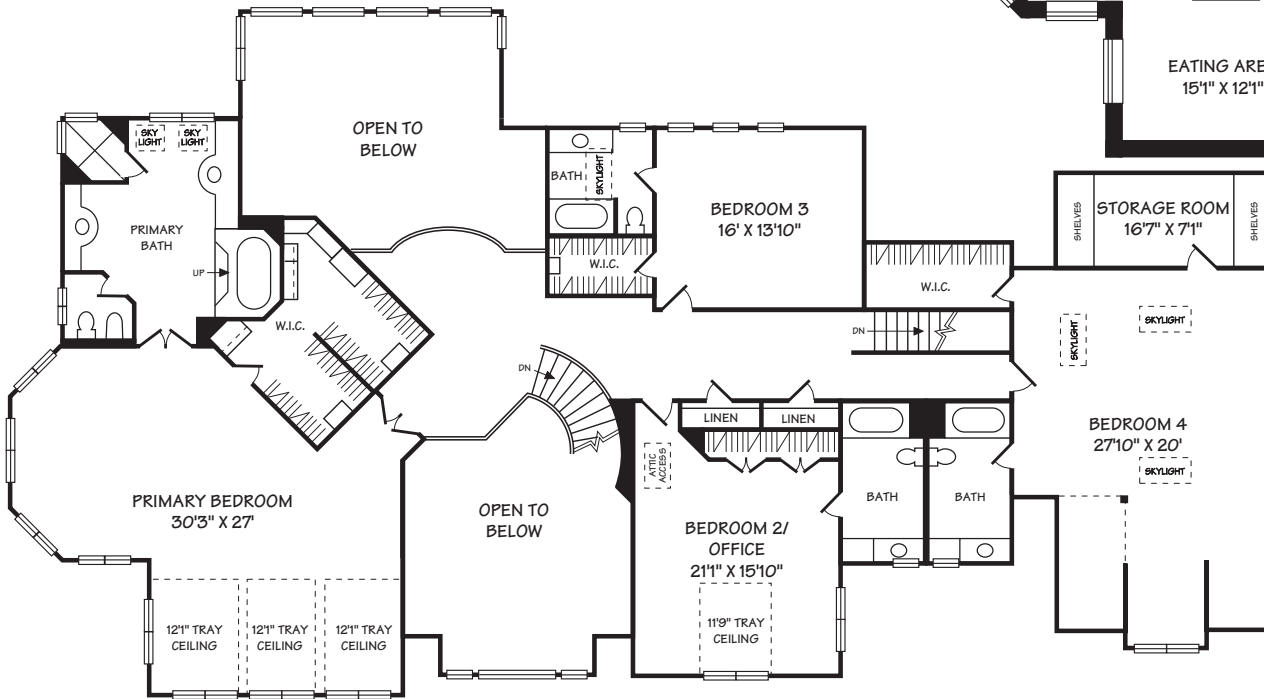
WWW.INTERIORFOOTPRINTS.COM

ALL ILLUSTRATIONS, DIMENSIONS AND SQUARE FOOTAGE ESTIMATES ARE APPROXIMATE AND MAY VARY FROM ACTUAL STRUCTURE. DIMENSIONS HAVE BEEN ROUNDED.

ESTIMATED SQUARE FOOTAGE: 10,300



**LOWER LEVEL**  
ESTIMATED SQUARE FOOTAGE: 3150



**SECOND LEVEL**  
ESTIMATED SQUARE FOOTAGE: 3450